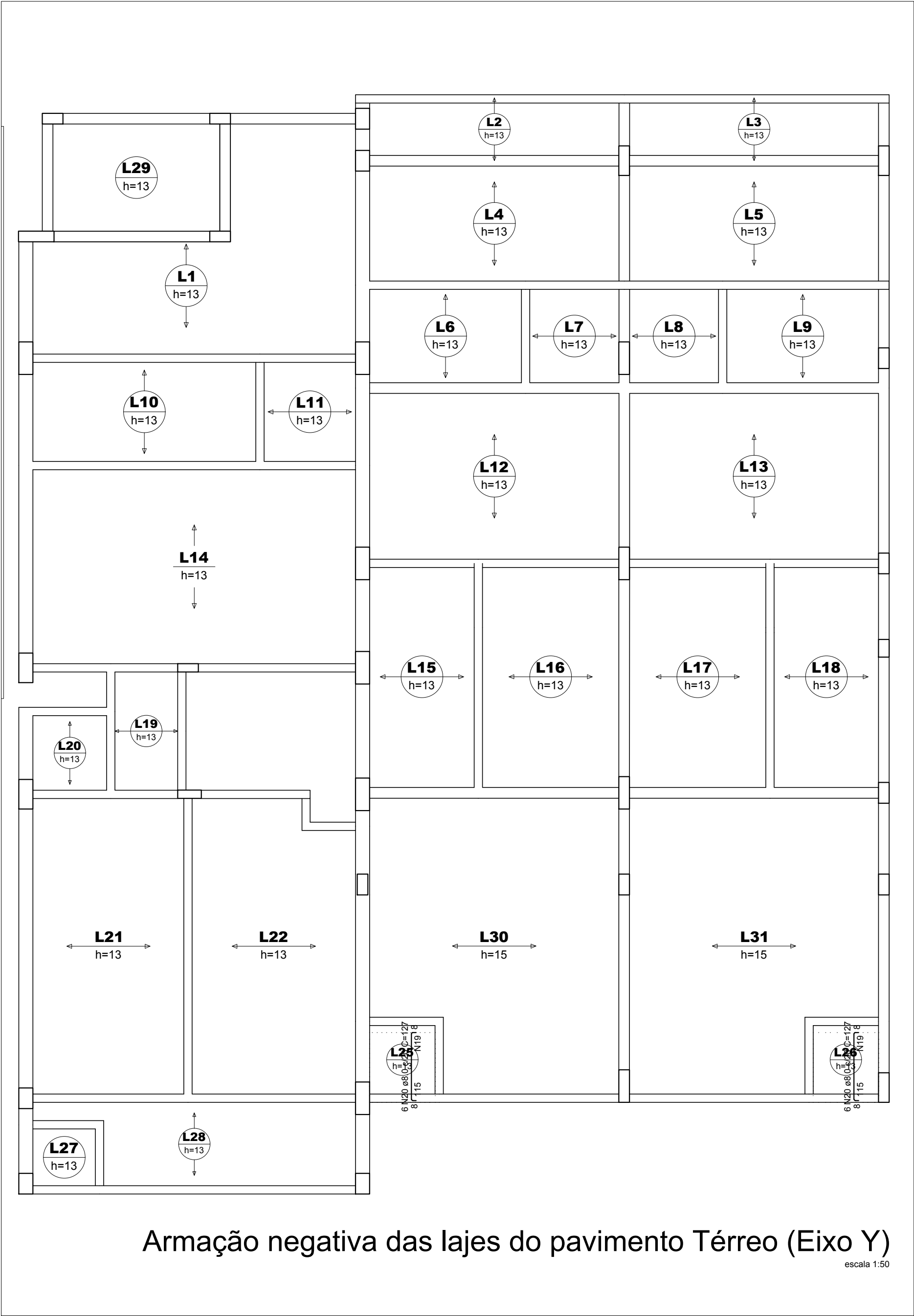
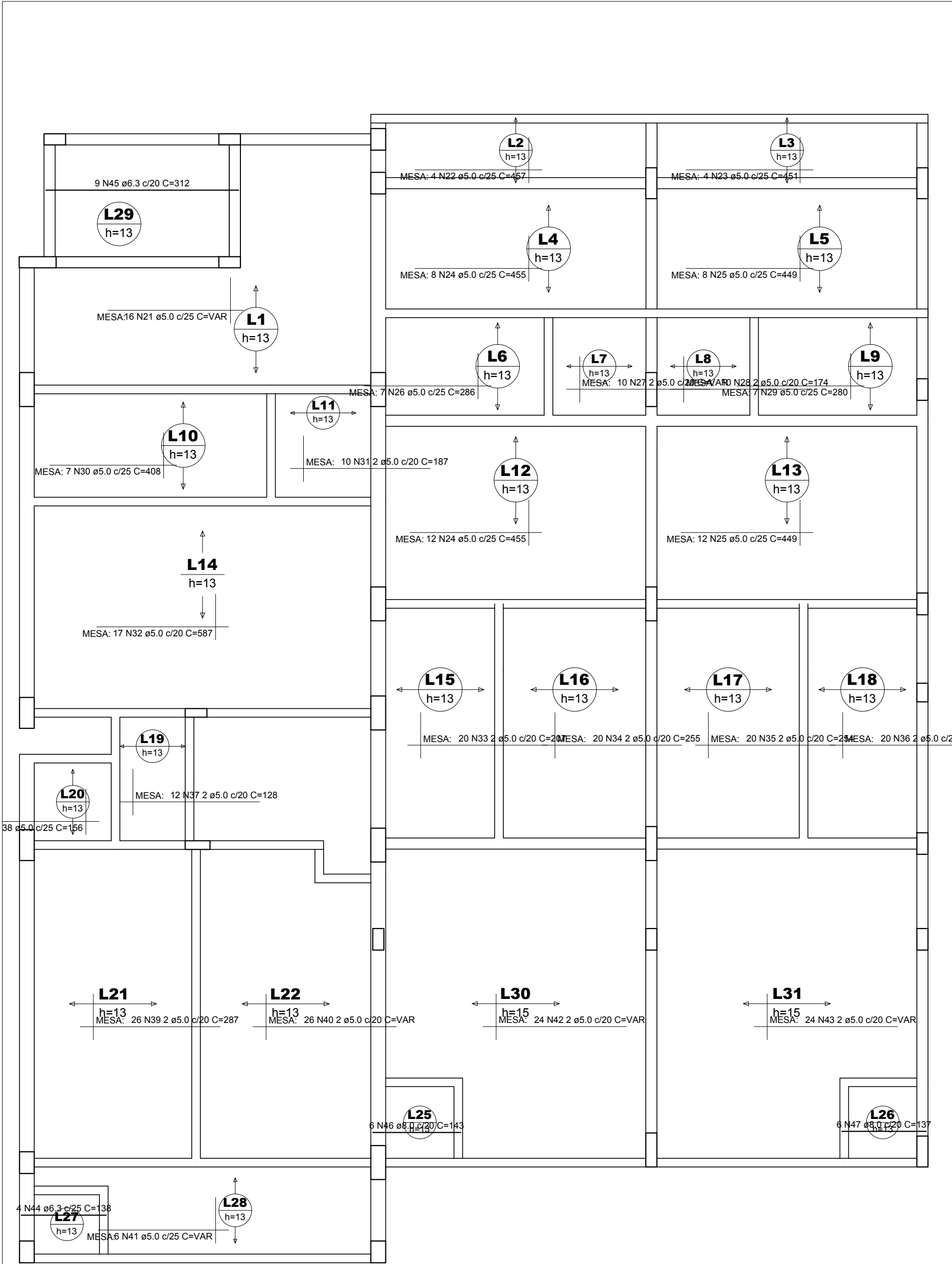


Armação negativa das lajes do pavimento Térreo (Eixo X)



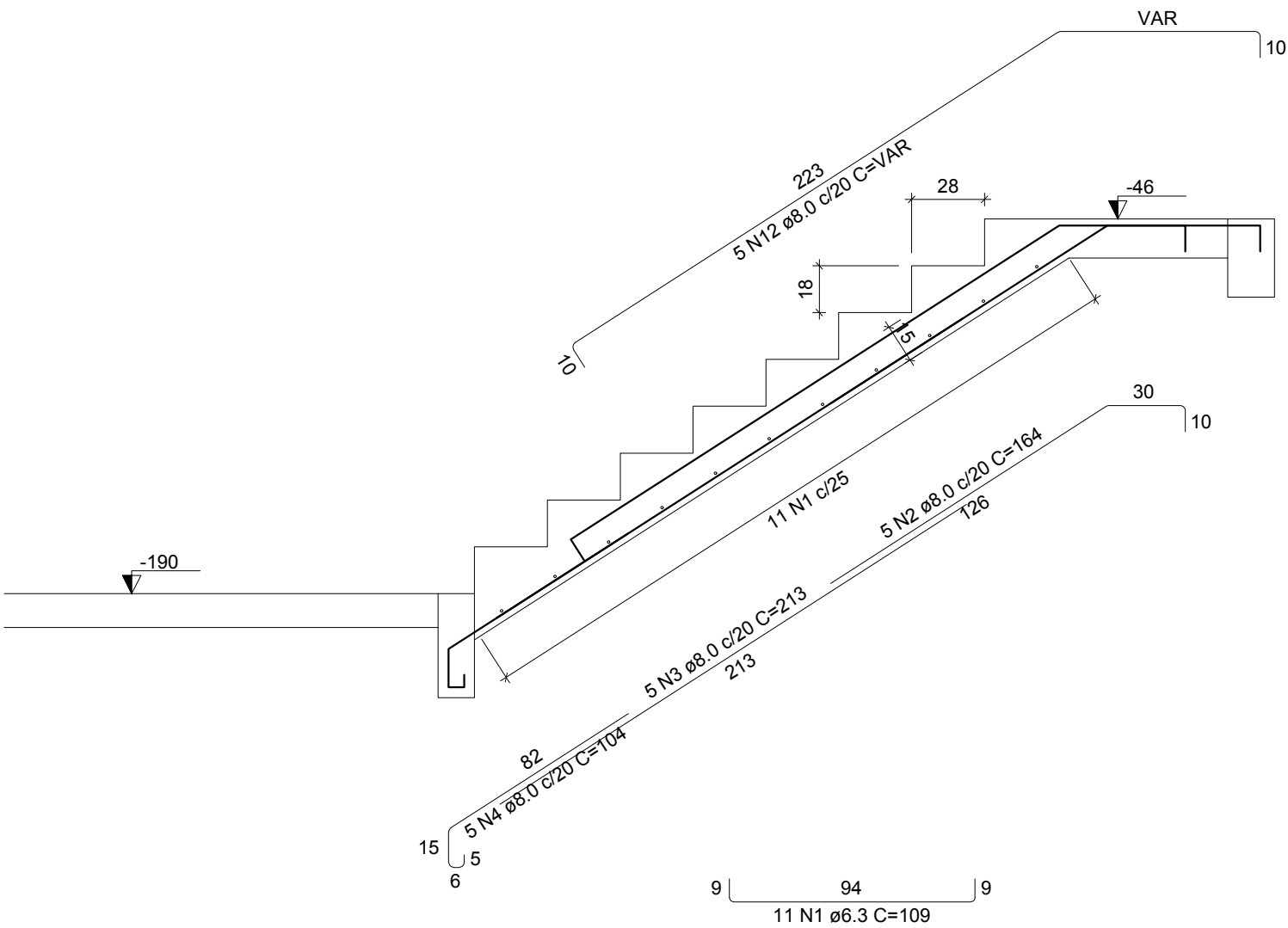
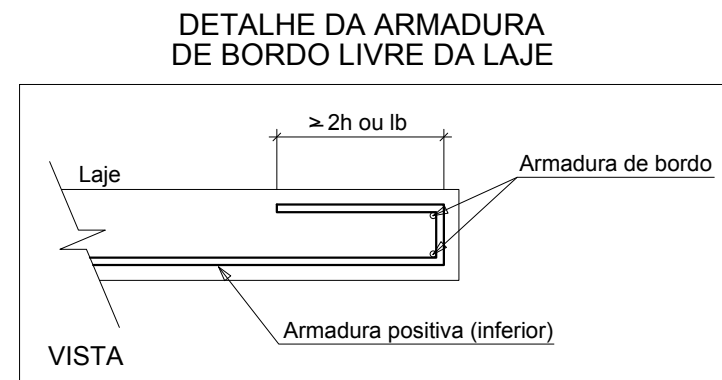
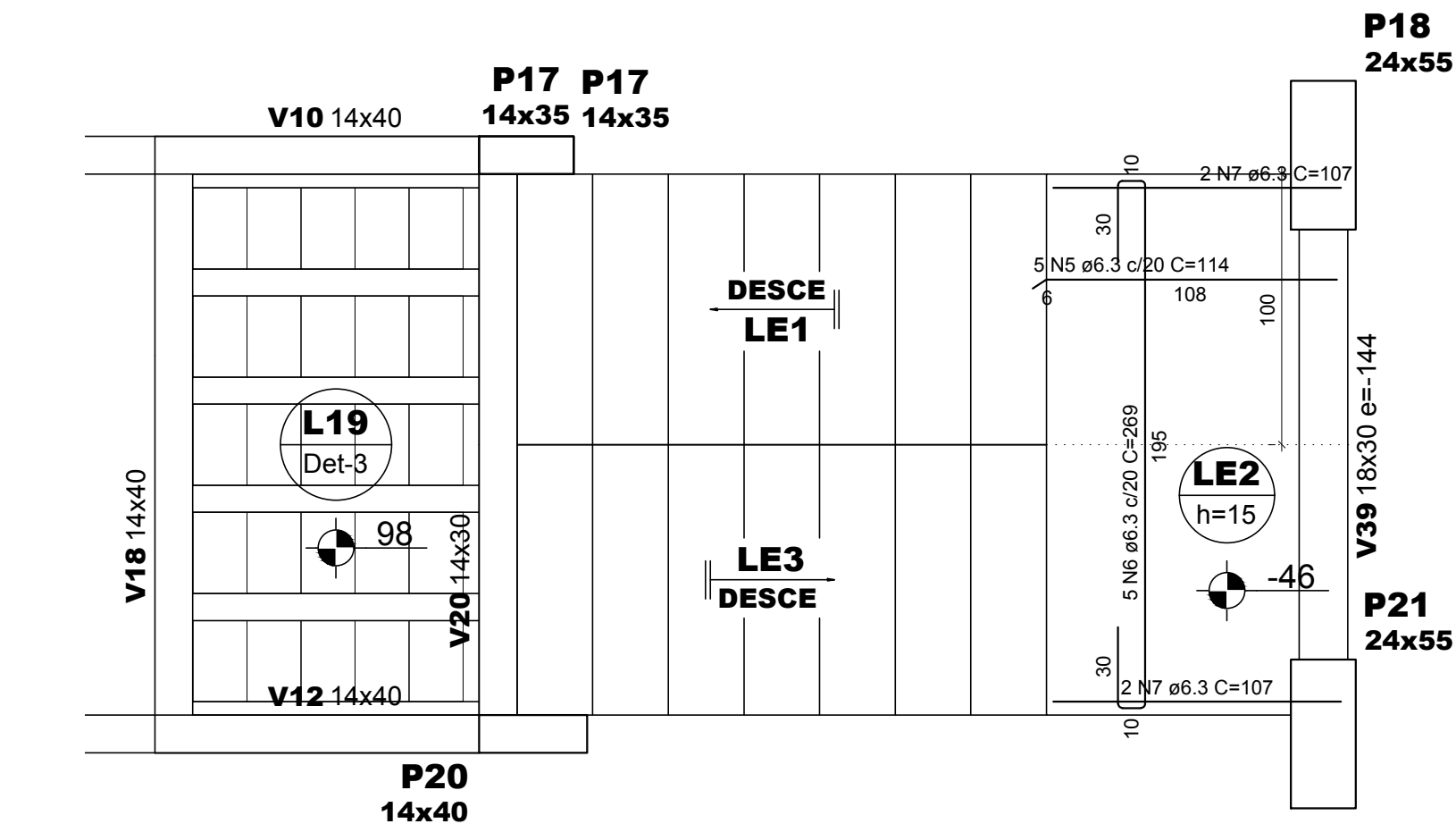


Armação positiva das lajes do pavimento Térreo (Eixo X)

escala 1:50

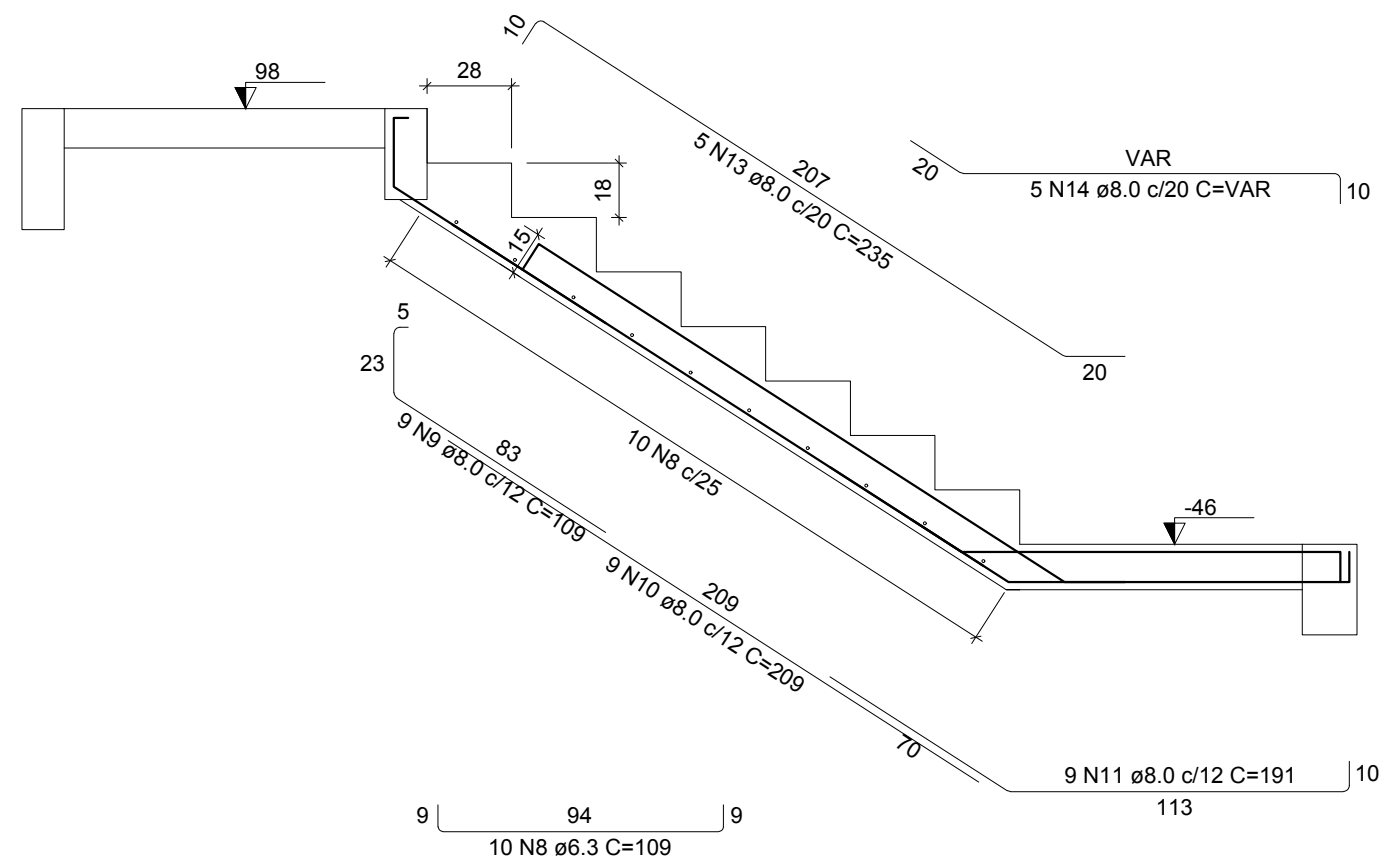


escala 1:50



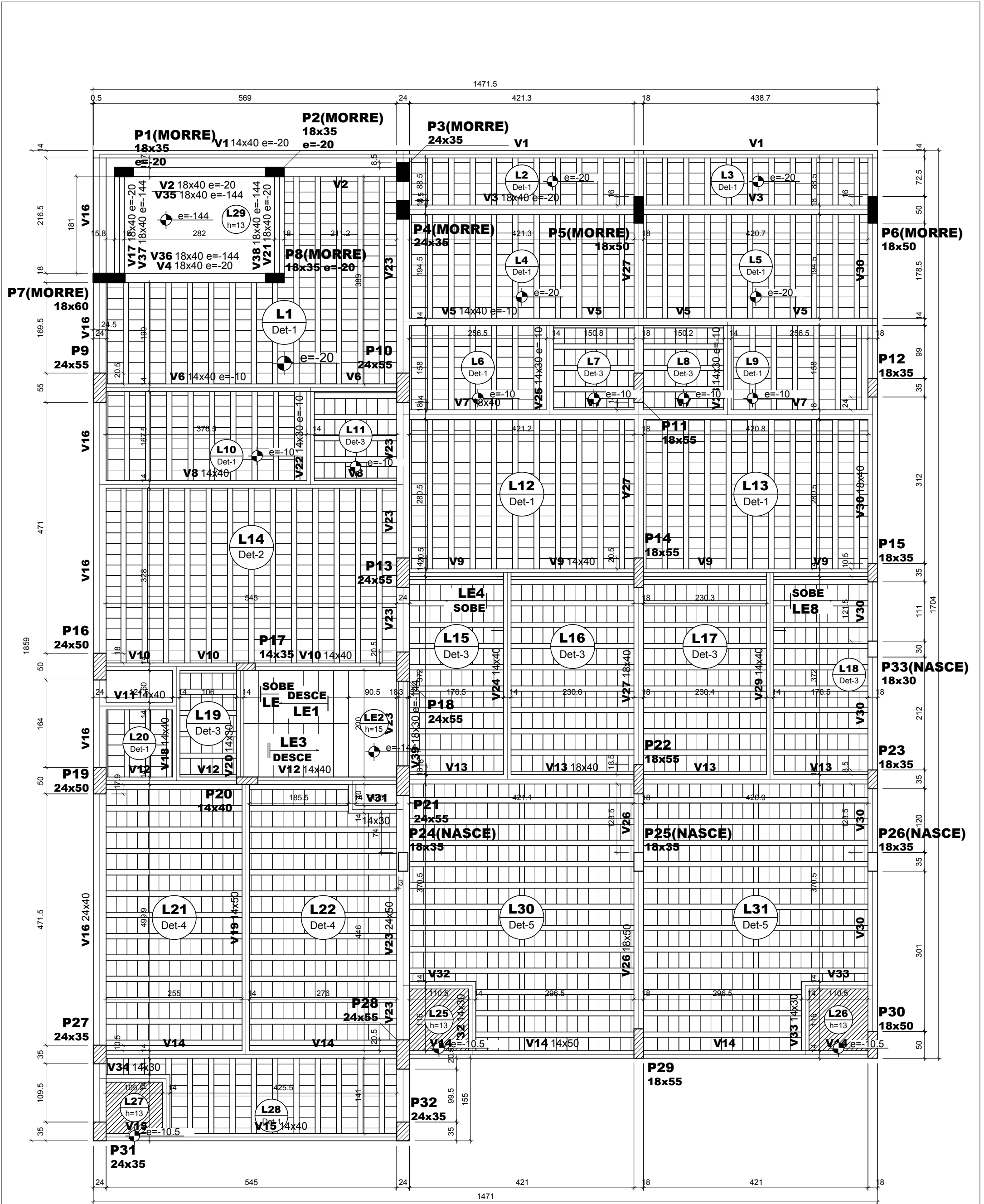
Corte A-A (LE1)

ESC 1:25



Corte B-B (LE3)

ESC 1:25



Forma do pavimento Térreo (Nível 98)

escala 1:50